



Addressing Health Disparities for LGBTQIA+ People and People with HIV in Public Housing

*Session 3:
Stories from the Field*



Housekeeping

- **All participants muted upon entry**
- **Engage in chat**
- **Raise hand if you would like to unmute**
- **Meeting is being recorded**
- **Slides and recording link will be sent via email**



National Center for Health in Public Housing

- The National Center for Health in Public Housing (NCHPH) is supported by the Health Resources and Services Administration (HRSA) of the U.S. Department of Health and Human Services (HHS) under grant number U30CS09734, a National Training and Technical Assistance Partner (NTTAP) for \$2,006,400 and is 100% financed by this grant. This information or content and conclusions are those of the author and should not be construed as the official position or policy of, nor should any endorsements be inferred by HRSA, HHS or the U.S. Government.
- The mission of the National Center for Health in Public Housing (NCHPH) is to strengthen the capacity of federally funded Public Housing Primary Care (PHPC) health centers and other health center grantees by providing training and a range of technical assistance.



National Center for Health in Public Housing

Staff Members



Fide Pineda Sandoval,
CHES
T/TA Manager



Jose Leon MD
Chief Medical
Officer

Guest Speakers



**Dr. Jamie Barney, LCSW-
BACS**
VP of Behavioral Health



**Anthony Fortenberry, DNP,
RN, NEA-BC**
Deputy Executive Director



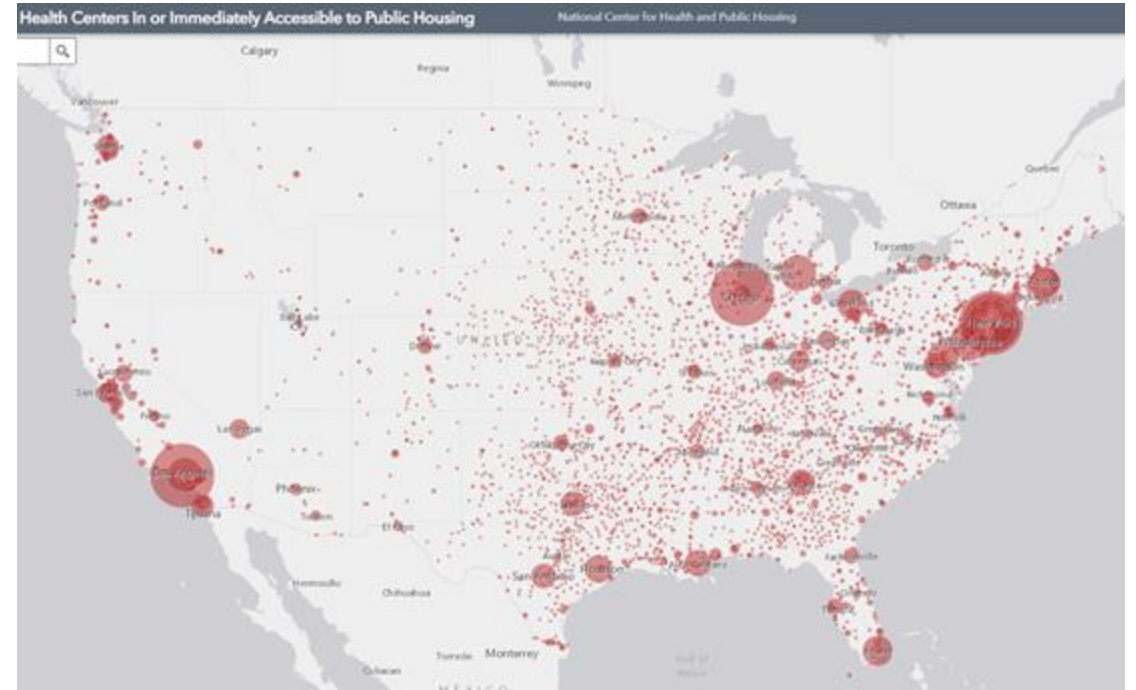
**Mrs. Margo Praylow,
LCSW-R, CASAC**
Clinical Director



Health Centers Close to Public Housing

- **1,370 Federally Qualified Health Centers (FQHC) = 30.5 million patients**
- **483 FQHCs In or Immediately Accessible to Public Housing = 6.1 million patients**
- **107 Public Housing Primary Care (PHPC) = 935,823 patients**

Source: [2022 Health Center Data](#)



Source: [Health Centers in or Immediately Accessible to Public Housing Map](#)

Public Housing Demographics



1.5 Million
Residents



2 Persons
Per Household



38% Disabled



52% White



91% Low
Income



43% African-
American



26% Latinx



19% Elderly



36% Children



32% Female Headed
Households with
Children

Source: HUD 2023

Health Center Patients Selected Diagnoses and Services Rendered

Table 6a Line 1 & 2 Symptomatic/Asymptomatic human immunodeficiency virus (HIV)	All FQHCs	PHPCs
Number of Patients with Diagnoses	199,442	4,993

Source: [2022 Special Populations Funded Programs](#)

Quality of Care Measures: HIV

HIV Linkage to Care	All FQHCs
Total Patients First Diagnosed with HIV (a)	7,221
Estimated Number of Patients Seen Within 30 Days of First Diagnosis of HIV	5,936
Estimated % of Patients Seen Within 30 Days of First Diagnosis of HIV	82.20%

Source: [Table 6B: Quality of Care Measures](#)

Quality of Care Measures: HIV

HIV Screening	All FQHCs
Total Patients Aged 15 through 65 (a)	16,333,039
Estimated Number of Patients Tested for HIV	7,156,718
Estimated % of Patients Tested for HIV	43.82%

Source: [Table 6B: Quality of Care Measures](#)

Ending the HIV Epidemic by 2030

- Reducing new HIV infections in the United States by 75% by 2025 and by 90% by 2030
- Advancing [health equity](#) by scaling up key HIV prevention and treatment strategies



Source: [Ending the HIV Epidemic in the U.S.](#)

PHPC Sexual Orientation Data

Patients by Sexual Orientation	Number	% of Known
Lesbian or Gay	9,799	1.88%
Heterosexual (or straight)	495,580	95.27%
Bisexual	10,733	2.06%
Other	4,050	0.78%
Don't Know	20,496	2.19%
Chose not to disclose	46,736	4.99%
Unknown	348,429	37.23%

Source: [2022 Special Populations Funded Programs](#)

PHPC Gender Identity Data

Patients by Gender Identity	Number	% of Known
Men	244,622	39.56%
Female	371,155	60.02%
Transgender Man/Transgender Male/Transmasculine	1,171	0.19%
Transgender Woman/Transgender Female/Transfeminine	1,469	0.24%
Other	5,929	0.63%
Chose not to disclose	9,961	1.06%
Unknown	301,516	32.22%

Source: [2022 Special Populations Funded Programs](#)

Guest Speaker



Dr. Jamie Barney, LCSW-BACS
VP of Behavioral Health



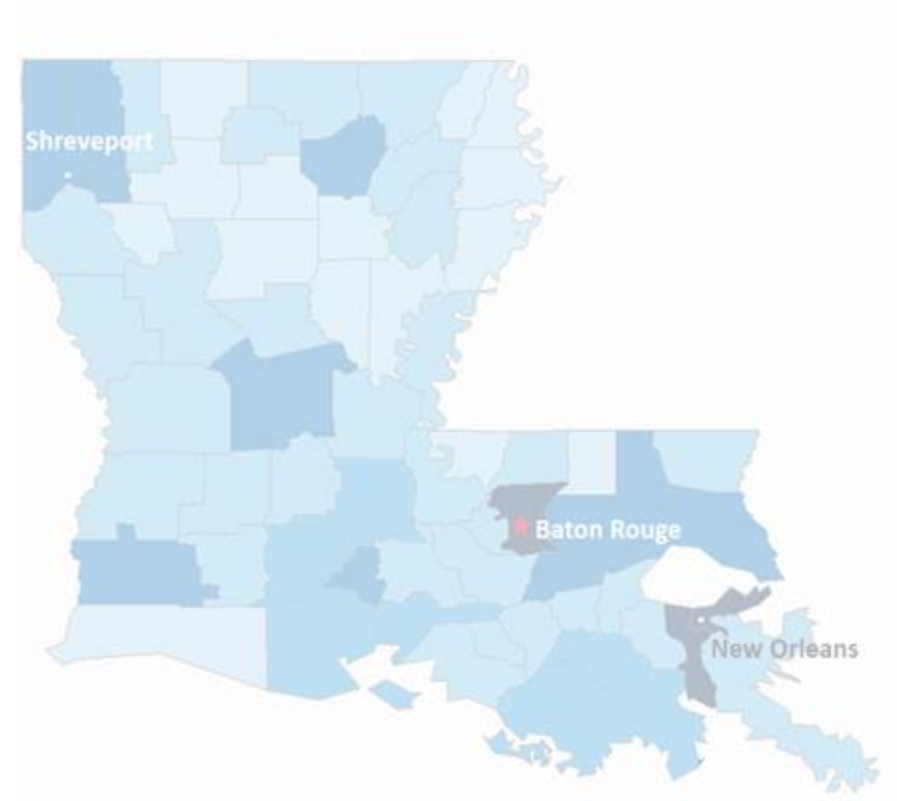


**Addressing Health Disparities for LGBTQIA+
people and people with HIV in public housing**

Dr. Jamie Barney, LCSW-BACS
VP of Behavioral Health

HIV/AIDS Alliance for Region Two (HAART), Inc dba Open Health Care Clinic (OHCC)

- Established in 1995
- Housing programs 2001
- Full service medical clinic 2007
- FQHC Status in 2015



Whole Care for the Whole Community

Our Services

PRIMARY CARE

PEDIATRICS

WOMEN'S HEALTH

ENDOCRINOLOGY

PODIATRY



SEXUAL HEALTH

PHARMACY

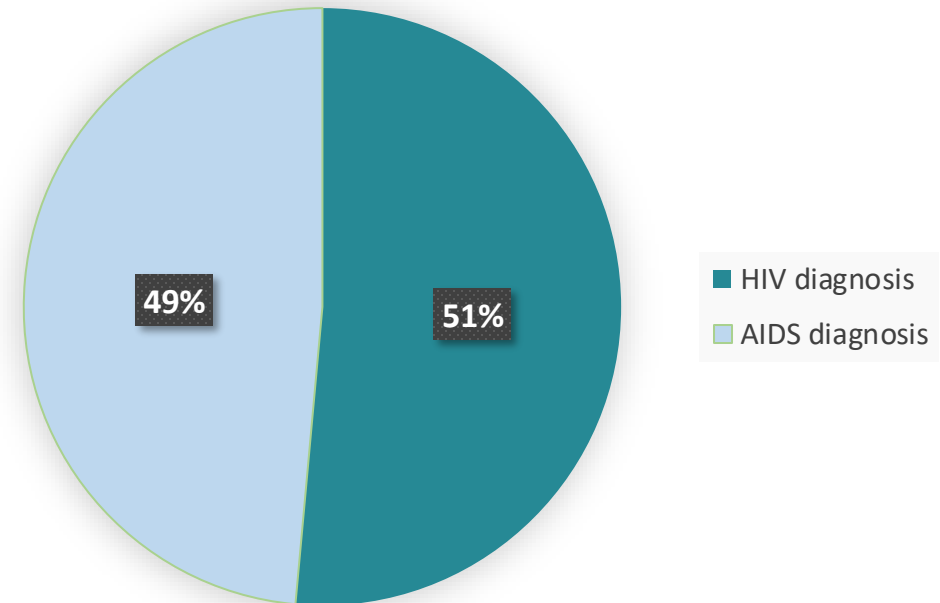
DENTAL

**BEHAVIORAL
HEALTH**

SOCIAL SERVICES

- ❖ **As of 06/30/2023, there are 5,480 PLWH in Baton Rouge Metropolitan Statistical Area.**
- ❖ **The Baton Rouge MSA ranked 5th nationally for HIV case rates.**
- ❖ **In 2022, 857 persons were newly diagnosed with HIV in Louisiana. 19% of those persons (167) live in the Baton Rouge MSA.**

**PLWH in
Metro Baton Rouge**



Open Health Care Clinic has provided PLWH in the Baton Rouge community with services for over 28 years. During 2022, OHCC has provided medical care to 972 PLWH, approximately 18% of PLWH in the Baton Rouge MSA.



LGBTQIA+

People of color - Black and Latin-x


Mental Health/Substance Use Disorder

Persons with no/low income

Persons experiencing homelessness

Disparities in HIV diagnosis and Access to Healthcare

Disparities



“The primary risk factor for new HIV diagnoses in Louisiana is **gay, bisexual, and other men who have sex with men** (GBM). In 2022, among new diagnoses who reported a risk factor, 60% reported being GBM, and an additional 2% reported being GBM and a person who injects drugs. As of June 30, 2023, 46% of all people with a reported risk factor living with HIV in Louisiana were GBM.”

HIV Criminalization

Science and Policy
Inconsistency

Sex Offender Registration

Discrimination

Shelters

Housing

Employment

Ostracism

Places of worship

Friendships

Family



Internalizing guilt and shame

- Suicidal ideologies
- Defeated/Complacent
- Withdrawn

Explosions of emotion

- Fearful
- Threatening

Substance misuse

- Addictions
- Risk of arrest

“There is no such thing as single-issue struggle because we do not live single-issue lives.”

- Audre Lorde

“Nobody’s free until everybody’s free.”

- Fannie Lou Hamer

“If we aren’t intersectional, some of us, the most vulnerable, are going to fall through the cracks.”

- Kimberle Williams Crenshaw

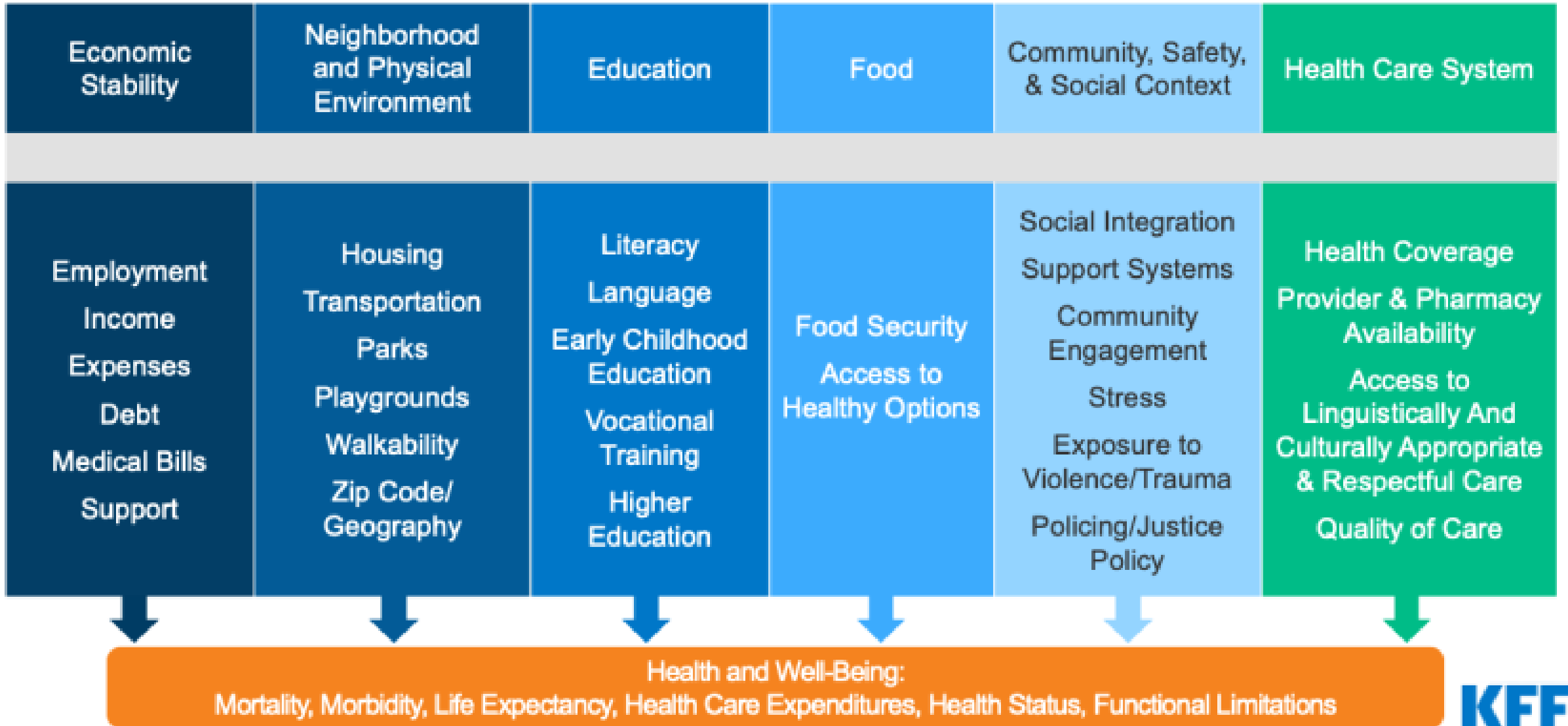
Intersectionality- how systems of oppression overlap to create distinct experiences for people with multiple identity categories.

Social Determinants of Health

"Conditions in which people are
born, grow, live, work, and age."

Figure 1

Social Determinants of Health





OPENHEALTH

HAART

Testing

Treatment (Rapid Start)

Case Management

Housing

Employment

Primary Medical Care

Behavioral Health Care

Oral Health Care

Housing Opportunities for People with AIDS (HOPWA)

- Facility/Project Based Housing
- STRMU
- Tenant Based Housing
- Permanent Housing Placement

Continuum of Care (CoC)

- Permanent Supportive Housing



HOUSING FIRST!!!

Case Management

FUNDING SOURCES

- Ryan White
- MAI
- EHE
- HOPWA
- CoC

SERVICES

- Assessment
- Case Planning
- Remove Barriers
- Connection to Resources



Behavioral Health

Individual Counseling
Group Counseling
Medication Management
Support Groups
Consumer Advisory Boards
Crisis Intervention



Grant Funded Services

- ❖ Outpatient Ambulatory
- ❖ Oral Health
- ❖ Patient Navigation
- ❖ Employment Coordination
- ❖ EHE Initiative Service
 - ❖ Identification Cards
 - ❖ Birth Certificates
- ❖ EHE Infrastructure
 - ❖ Naveon App
 - ❖ Naveon App Incentive
- ❖ Emergency Financial Assistance
 - ❖ Medication Access
 - ❖ Utility Assistance
 - ❖ Food Vouchers
 - ❖ Grocery Delivery
- ❖ Housing
 - ❖ Rental Assistance
- ❖ Transportation
- ❖ Health Insurance Premiums & Cost Shares

Arrest made after 3 homeless people killed in Baton Rouge

Police say it appears the victims were shot while they were sleeping and detectives believe the three killings are related.



Credit: The Advocate
Jeremy Anderson. (Left). An East Baton Rouge Coroner's Office Street Friday, Dec. 27, 2019. (Right) Photo by Travis Spradling /

Homeless man died in cold weather trying to get to family

by Associated Press | Wed, December 28th 2022, 7:53 AM CST



An electronic message board advises drivers of potential congestion on the intersecting interstate as they drive south on Interstate 55 in north Jackson, Miss., Monday, Feb. 15, 2021, as light snow mixed with sleet, and rain continue to cover much of the state. The National Weather Service forecasts temperatures barely hovering at 20 degrees Fahrenheit, and likely slipping into the single digits by Tuesday morning. A winter storm warning continues throughout the state. (AP Photo/Rogelio V. Solis)



BATON ROUGE, La. (AP) — A 57-year-old homeless man, who died from cold weather exposure Christmas day, was trying to travel from Louisiana to Tennessee to get to family members, officials said.

Charles Wilson Ligon Jr. was found dead by hunters in southern Mississippi Monday. Ligon was dressed in a light jacket and had money and a cellphone, The Times-Picayune reported.

CRIME

Store Clerk Seen on Video Throwing Bucket of Water on Homeless Woman in Freezing Weather Is Charged

Baton Rouge convenience store clerk was arrested and has reportedly been fired from her job

1 on December 29, 2022 10:57AM EST



The alleged incident. PHOTO: BRPROUD NEWS

The clerk is apparently homeless and was doused with a bucket of water during the Christmas weekend's freeze that enveloped many areas, and police say a 33-year-old store clerk has been charged for the incident, multiple news outlets report.

Logitech Zone Vibe 100 Lightweight...
★★★★☆ 524
\$79.99 prime
Details & delivery
Add to Cart

Vulnerable Subpopulations: Best Practices

- Respect, Dignity, Care
- Prioritize Patient Needs
- Peer Models
- Case Management
 - Remove Barriers
 - Community Resources (211)
- Representation Matters
 - Consumer Advisory Board (CAB)
 - Focus Groups
- Evidence Based Practice
 - Trauma Informed Care
 - Motivational Interviewing
- Continuous Quality Improvement



Guest Speaker



Anthony Fortenberry, DNP, RN, NEA-BC
Deputy Executive Director

CALLEN-LORDE

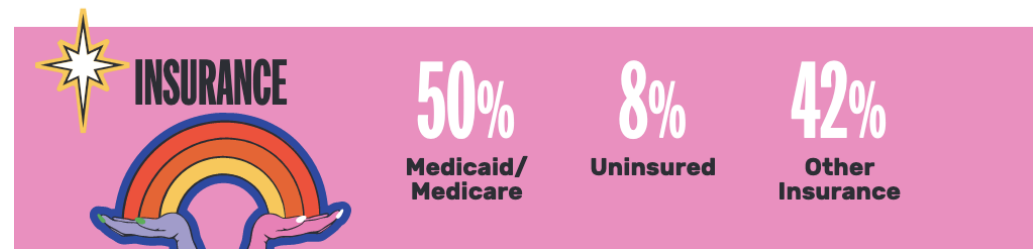
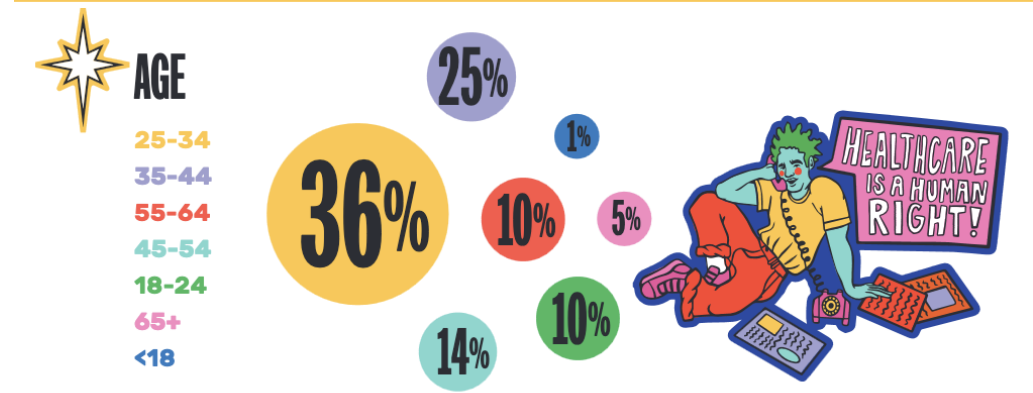
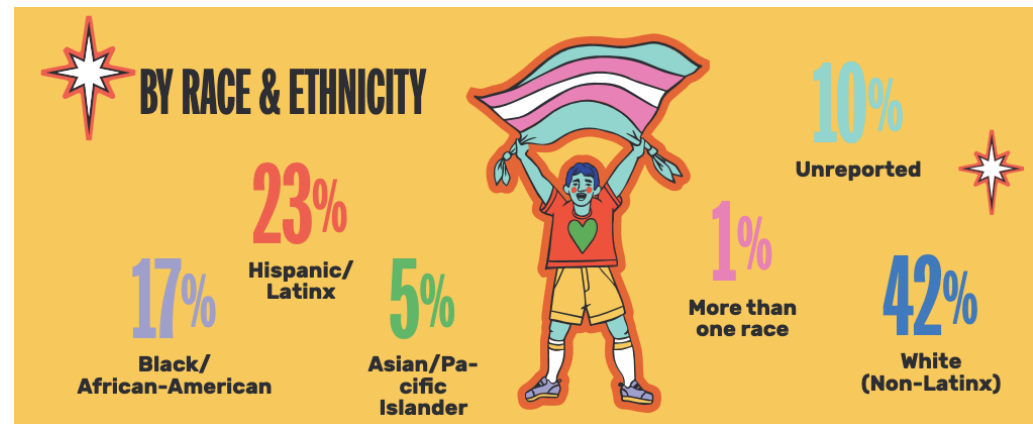
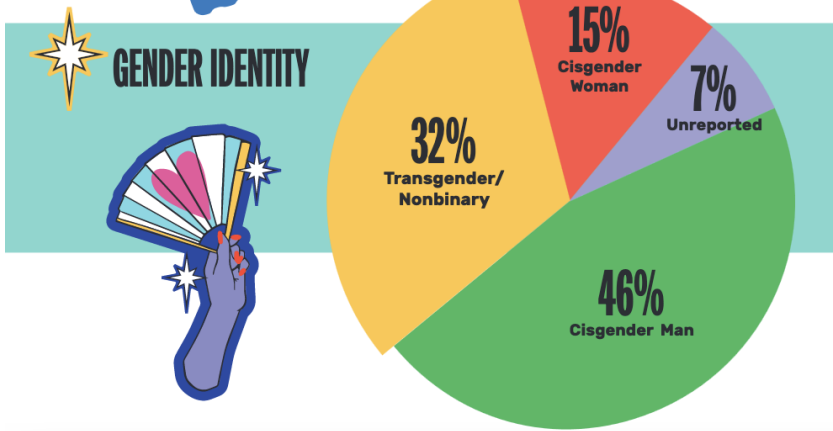
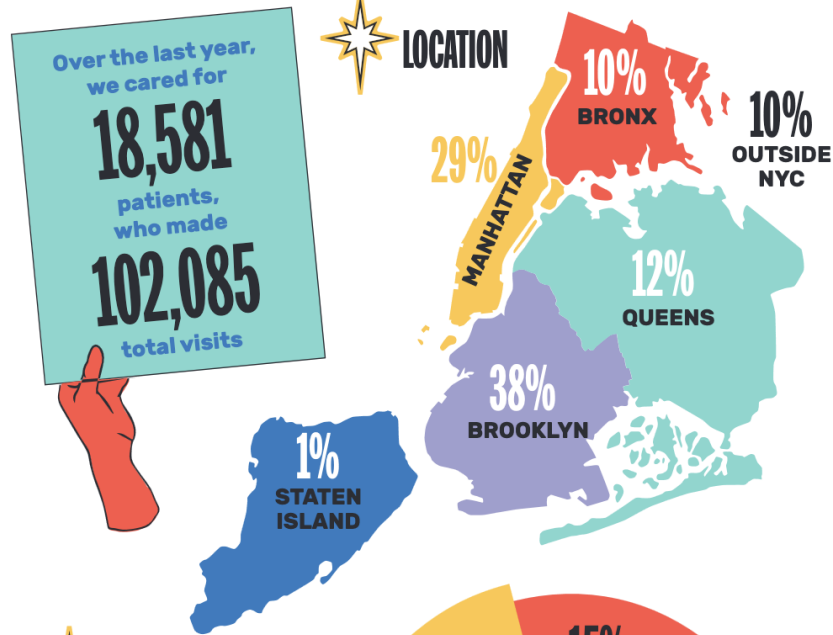


Addressing Health Disparities for LGBTQIA+ People & People Living with HIV in Public Housing

Dr. Anthony Fortenberry, DNP, RN, NEA-BC
Deputy Executive Director

Callen-Lorde Community Health Center
New York, NY

CalLEN-LORDE



Learning Objectives

Lessons from the field:

- 1. Strategies to address health disparities in disease prevalence and behavioral health burden affecting LGBTQIA+ people and people living with HIV**
- 2. Building institutional understanding for how racial and ethnic disparities and age cohort differences intersect with health disparities**
- 3. Strategies for addressing discrimination and stigma on the health and wellbeing of these populations**

CALLEN-LORDE

LGBTQ+ Stigma & Discrimination

Decreased access to health insurance, employment, housing, adoption, and retirement benefits.

More than 1 in 10 LGBTQ+ Americans report experiencing discrimination from a healthcare provider.¹

15% of LGBTQ+ Americans report postponing or avoiding medical treatment and 20% have avoided primary care due to discrimination.¹

Shortage of health care providers who are knowledgeable and clinically competent in LGBTQ+ health.

Anti-LGBTQ+ Legislation- 84 have been passed into law. Of these anti-LGBTQ+ bills, 136 are focused on healthcare restrictions.²

CALLEN-LORDE

Disparities

- LGBTQ+ Americans experience disproportionate mental health issues with limited access to culturally competent mental health providers.^{1,3}
- LGBTQ+ youth are 2 to 3 times more likely to attempt suicide and more likely to be homeless.¹
- MSM experience higher rates of HIV and other STDs, especially among communities of color.¹
- LGBTQ+ populations have the higher rates of tobacco, alcohol, and illicit substance use.¹
- Older LGBTQ+ adults face additional barriers to health because of isolation and a lack of social services and culturally competent providers.¹

Interventions



Centering Patients



Needs Assessment



Training & Education



Competency Evaluation



Expanding Access to Support

CALLEN-LORDE

Centering Patients

Community Advisory Board

Partner Committees:

HIV Committee

Transgender Committee

Disability Committee

Aging Committee

Behavioral Health Committee

Research Committee

Women's Committee

Alumni Committee

Quality Committee

CalLEN-LORDE

Needs Assessment

Survey

SDOH/Exposure Data

Clinical Quality Outcomes

CALLEN-LORDE

Training & Education

Clinical Directorship

Team-based Strategy

Interprofessional Training

Top-of-scope Strategy

Competency Evaluation/Data Transparency

CALLEN-LORDE

Community Access

- **Patient Navigation Programs**
- **Medical-Legal Partnerships**
- **Food Programs/CSAs**
- **Age-appropriate Socialization Programs**
- **Home-based Programming**

CALLEN-LORDE

References

¹The Center for American Progress. (2020). *The state of the LGBTQ community In 2020.*

<https://www.americanprogress.org/article/state-lgbtq-community-2020/>

²American Civil Liberties Union. (2023). *Mapping attacks on LGBTQ rights in U.S. state legislatures.*

<https://www.aclu.org/legislative-attacks-on-lgbtq-rights>

³Williams, N. D., & Fish, J. N. (2020). The availability of LGBT-specific mental health and substance abuse treatment in the United States.

Health services research, 55(6), 932–943.

<https://doi.org/10.1111/1475-6773.13559>

Resources

**The National Association of Community Health Centers (NACHC)
Transforming Primary Care for LGBT People**

<http://www.nachc.org/wp-content/uploads/2018/07/LGBT-Toolkit.pdf>

Fenway Health: The National LGBTQIA+ Health Education Center

<https://www.lgbtqiahealtheducation.org/>

**Whitman-Walker Community Health Center: A Guide to Best Practices
in LGBTQIA+ Cultural Competency Training**

<https://whitmanwalkerimpact.org/cc-toolkit/>

CalLEN-LORDE

THANK YOU

Dr. Anthony Fortenberry, DNP, RN, NEA-BC
afortenberry@callen-lorde.org

Callen-Lorde Community Health Center

CALLEN-LORDE

Guest Speaker



Mrs. Margo Praylow, LCSW-R, CASAC
Clinical Director

**HARLEM
UNITED**

Q&A Session





Complete our Post Evaluation Survey



Contact Us

<p>Robert Burns Program Director Bobburns@namgt.com</p>	<p>Jose Leon, M.D. Manager of Clinical Quality jose.leon@namgt.com</p>
<p>Kevin Lombardi, M.D., M.P.H. Manager of Policy, Research, and Health Promotion Kevin@namgt.com</p>	<p>Fide Pineda Sandoval, C.H.E.S. Manager of Training and Technical Assisntance Fide@namgt.com</p>
<p>Chantel Moore, M.A. Manager of Communications Cmoore@namgt.com</p>	<p>Please contact our team for Training and Technical Support 703-812-8822</p>

Thank you!

